

## Arrival and Dismissal @ LCCA West

*\*Note: There are alternate, special arrival directions for the FIRST DAY of school.*

Students should arrive between 7:55 and 8:15. Carline closes at 8:15.

Students will dismiss from 3:25 - 3:45. On Wednesdays, dismissal is from 2:25-2:45.

### Directions:

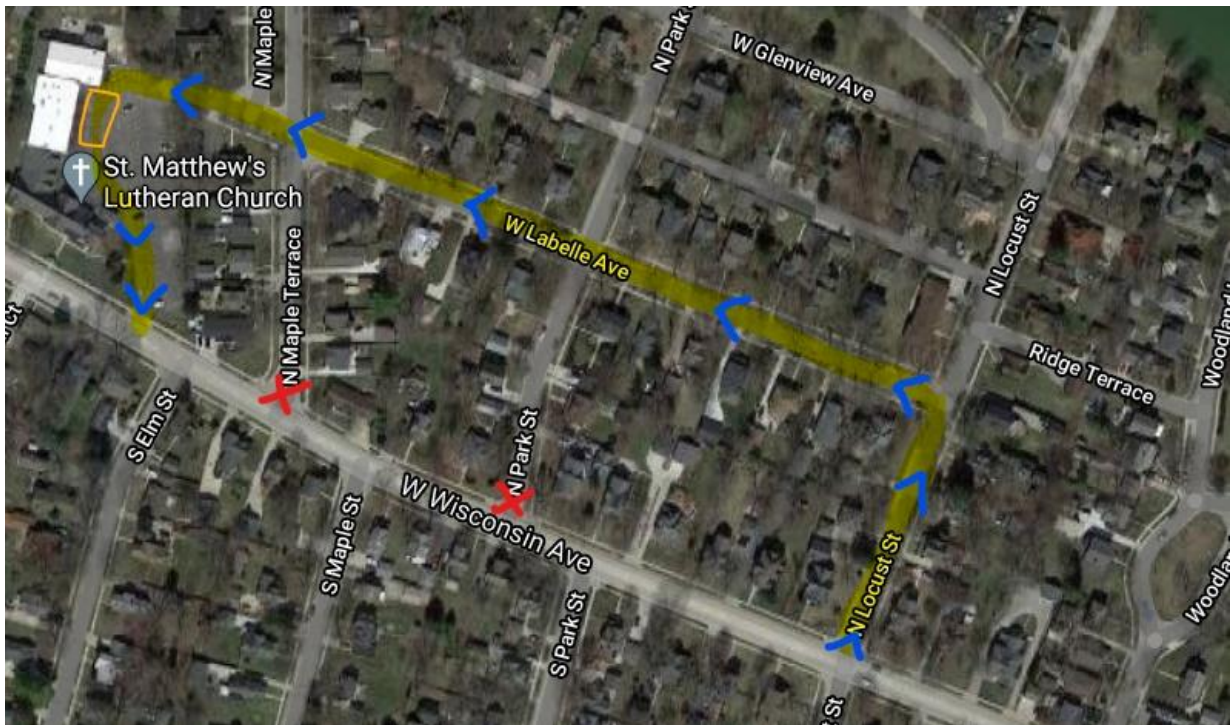
ALL cars enter onto N. Locust St. from Wisconsin Ave.

Turn left on to W. Labelle Ave. and proceed to the parking lot entrance.

All students will exit/enter vehicles on the passenger-side in the drop-off/pick-up zone (orange rectangle).

REMAIN IN YOUR VEHICLE.

In the morning, all students should be ready to quickly exit their vehicle on the passenger-side in drop-off zone. In the afternoon, students will walk to the car once you are in the pick-up zone.



## **Safety is our greatest priority.**

Please drive slowly and attentively.

NO CELL PHONE USE DURING CARLINE.

Do not let your students out of your vehicle ahead of or beyond the drop-off zone.

Pull as far forward in line as possible toward the attending supervisor.

**CARLINE will open at 7:50 and 3:20 respectively.**

**DO NOT arrive and queue up in the parking lot any earlier than 7:50/3:20.**